

Complete GPR Systems for Concrete Inspection

StructureScan™ Mini XT

www.geophysical.com

The StructureScan Mini XT is GSSI's newest generation of our very popular all-in-one GPR systems. The StructureScan Mini XT offers a 2.7 GHz antenna for superior target resolution and can reach depths of 20 inches (50 cm). Ideal for locating rebar, conduits, post-tension cables, voids and real time determination of concrete slab thickness.



- 1 All-in-One handheld GPR system
- 2 Ergonomic handle with six-button control
- 3 HD touchscreen display with easy to use operator interface
- 4 Survey wheel encoder
- 5 Guiding laser for locating and 3D surveying

Integrated Tool

All-in-one concrete inspection tool - antenna, positioning system and control unit

State-of-the-art touchscreen interface and six-button control for enhanced usability

Rugged, Compact Design

This new generation system is IP-65 rated to withstand the jobsite's toughest conditions

System Flexibility

The StructureScan Mini XT will offer multiple accessories for various survey options and advanced data collection modes

Value

The perfect blend of price and performance, backed by a two-year warranty

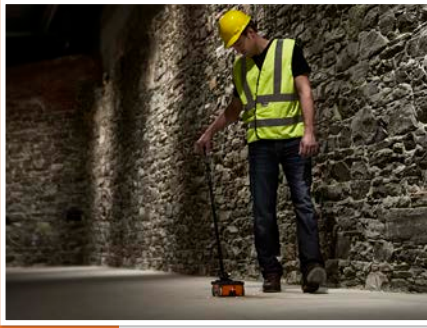


"The lasers in the StructureScan Mini are great when marking out rebar, especially when we're at a job site with bad lighting."

Chase Johnson, GPRS San Francisco

StructureScan Mini XT Features

The StructureScan Mini XT is ideal for locating the position and depth of metallic and non-metallic objects in concrete structures, including rebar, conduit, post-tension cables, voids and service utilities. In addition, the Mini XT can help identify structural elements including pan deck, concrete cover and slab thickness.



High Frequency, High Resolution Concrete Antenna

- The StructureScan Mini XT employs a new 2.7 GHz antenna positioned 8 mm off the surface, providing additional ground clearance which allows the antenna to be used over rough concrete surfaces. This antenna provides excellent near surface resolution while also maintaining the ability to resolve deeper targets.

Enhanced Data Visualization

- Get first-in-class data visualization with a state-of-the-art 6.5 inch HD touchscreen user interface and different operation modes designed for beginner to advanced use.
- Use QuickScan to collect data with the push of one button, or select any of the app-based data collection options including ScanMax and Scan3D for advanced data interpretation.
- The StructureScan Mini XT makes it easy to customize the data display with a variety of color adjustments. Real-time migrated data, onscreen reference markers and real-time signal floor indicator are also available.

Forward Thinking Design

- Incorporated into the design are three accessory ports that allow for future expansion. The extension pole accessory, with six-button remote operation, is ideal for walking and wall surveys.

Typical Uses

- **Concrete inspection** – locate metallic and non-metallic targets in walls, floors and ceilings
- **Structure inspection** – bridges, monuments, walls, towers, tunnels, balconies, garages, decks
- **Condition assessment** – map relative concrete condition for rehab planning
- **Measure slab thickness**
- **Void location**

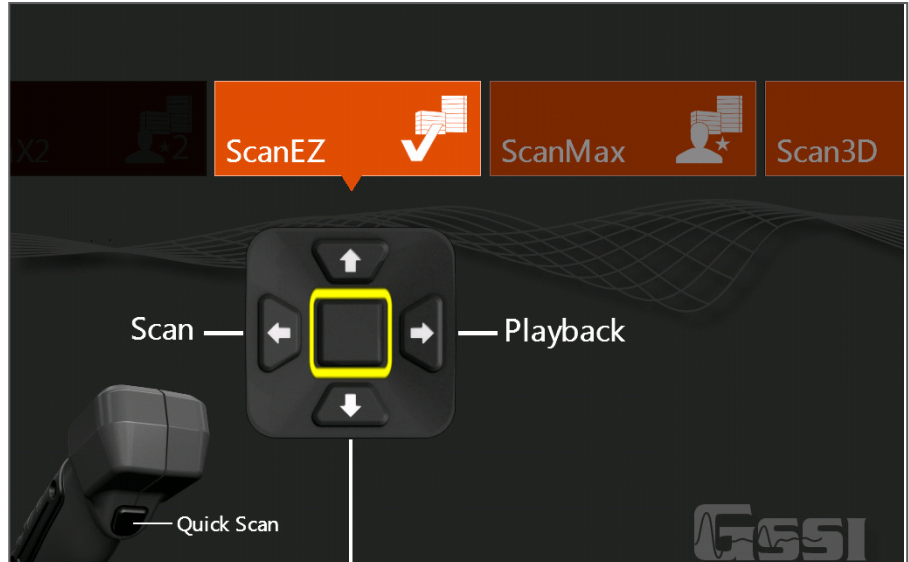
StructureScan XT Data Modes

The StructureScan Mini XT features three data collection modes; Simple, Standard, and Advanced.

Simple mode is perfect for quick data collection - simply select the depth of survey and concrete type, and start scanning. Standard mode offers two apps, Scan3D and ScanMax. Advanced Mode offers XScan and DualScan apps for expanded data interpretation.

Advanced Visualization

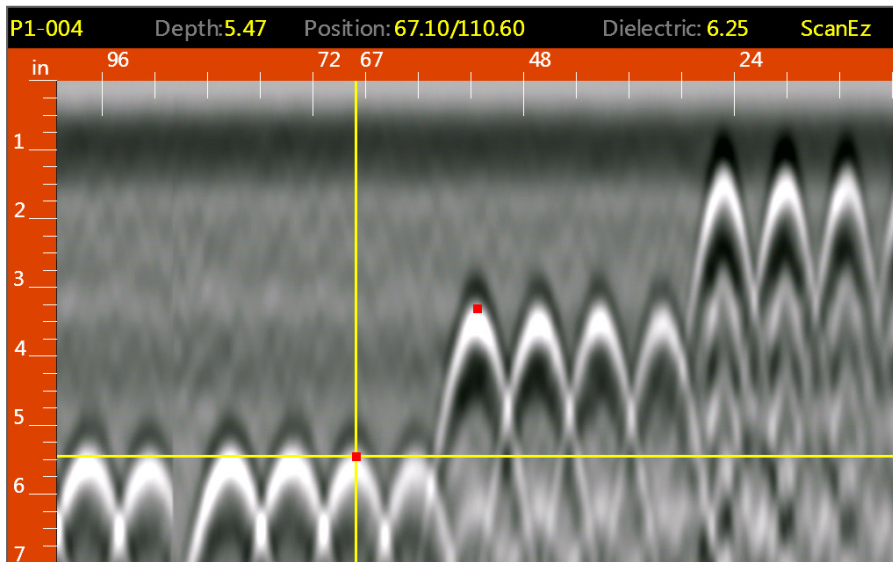
- **Scan3D** - Revolutionary three-dimensional x-ray like image with five view points
- **XScan** - Visualize two perpendicular 2D profiles in a 3D format
- **DualScan** - Compare two parallel 2D profiles in raw or focus mode



StructureScan Mini XT user interface illustrating the Standard mode of operation.

2D Data Collection

The StructureScan Mini XT provides intuitive data visualization and includes multiple color themes, save image functionality and real-time display adjustments.



Data illustrates several metallic targets at various depths collected in Standard mode using the ScanMax application. Red dots and crosshair identify user marked targets.

StructureScan Mini XT Specifications

System	
Antenna Center Frequency	2.7 GHz
Display Modes	Linescan, Focus and 3D
Data Storage	14.5 GB (340 - 2x2 3D images)
Depth Ranges	4, 8, 12, 16, 20 inches (10, 20, 30, 40, 50 cm)
Battery	Li-ion Battery, 2.5 hour runtime (battery life dependent on level of display brightness and usage)
Data Format	RADAN .dzt
Languages	English, French, Japanese, Chinese
Environmental	
Operating Temperature	-4°F to 104°F external (-20°C to 40°C)
Storage Temperature	-40°F to 140°F external (-40° to 60°C)
Relative Humidity	<95% non-condensing
Environmental	IP-65 Rated
Mechanical	
Dimensions	9.3 x 6.2 x 7.3 in. (23.6 x 18.4 x 15.7 cm)
Weight	4 lbs. (1.8 Kg) with battery
System Height Off Ground	.31 inch (8mm)
Display Size	6.5 inches
Display Resolution	1024 x 768

Systems Include

StructureScan Mini XT
Dual battery charger
Two Li-ion batteries
AC power adapter for battery charger
International plugs for AC power adapter
Transit case
Safety wrist strap
3 mm hex driver tool
Data collection grids (sample pack)
User Manual
2-year warranty and training at a GSSI Training Center



sales@geophysical.com

40 Simon Street • Nashua, NH 03060-3075
Tel: 603.893.1109 • Toll Free: 800.524.3011 • Fax: 603.889.3984

Geophysical Survey Systems, Inc.

This device has not been authorized as required by the rules of the Federal Communications Commission. This device is not, and may not be, offered for sale or lease, or sold or leased, until authorization is obtained.

Copyright © 2016 All Rights Reserved
Geophysical Survey Systems, Inc.
01.14.2016